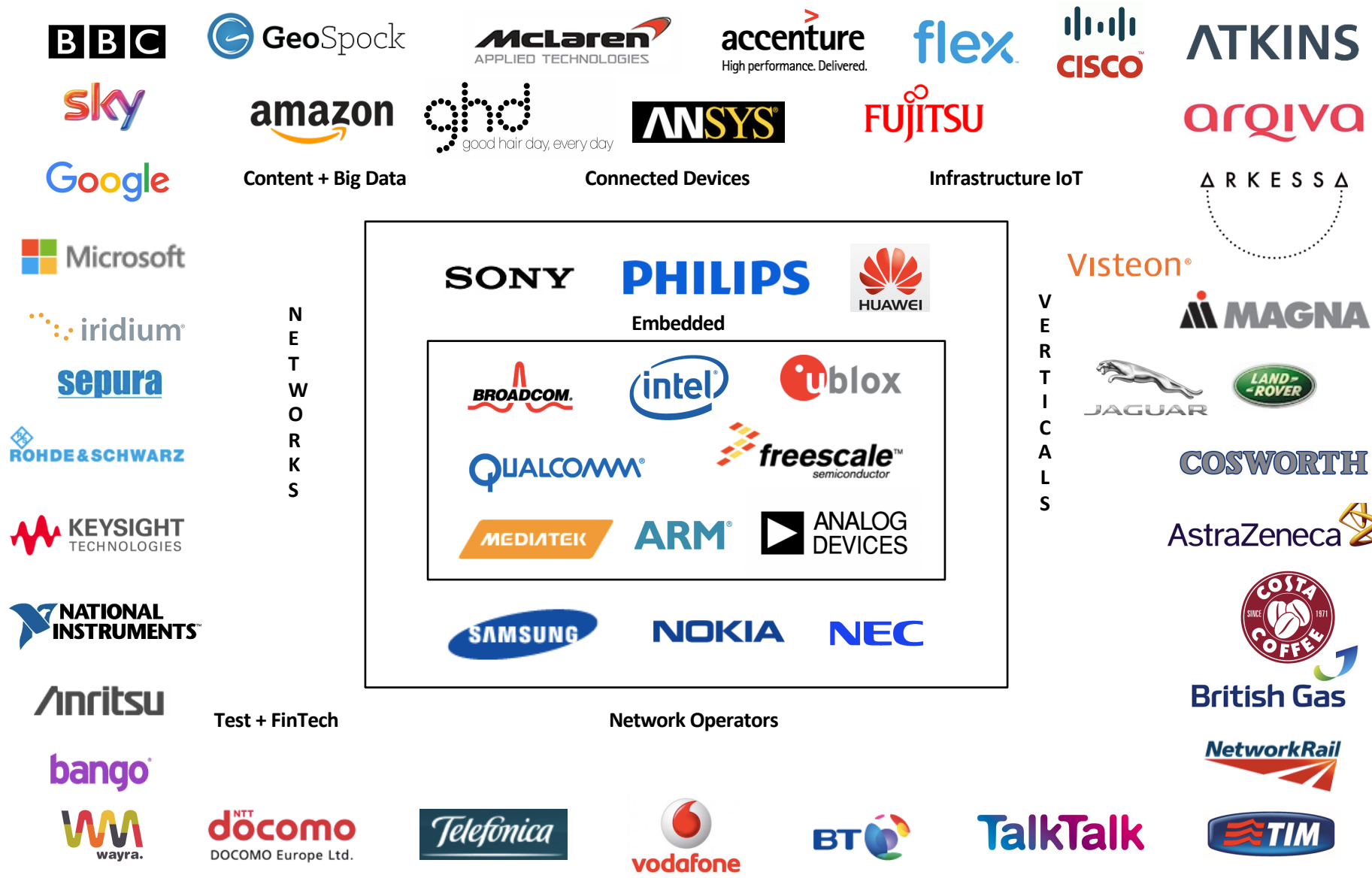




CW Members: 400 + wide coverage of the technology eco-system



CW Members: Service Providers & Thought Leaders



**National Institute for
Health Research**



**UNIVERSITY OF
CAMBRIDGE**

Brain Injury

Healthcare Technology Co-operative



**Anglia Ruskin
University**



**University of
BRISTOL**

Deloitte.

MILLS & REEVE

Taylor Vinters



tech^{UK}



**Department for
International Trade**

Innovate UK
Technology Strategy Board



Bird & Bird

OLSWANG

WHITESPACE NORWICH



**Greater Cambridge
Greater Peterborough
Enterprise Partnership**

CATAPULT
Digital



KTN
the Knowledge Transfer Network



**TECH
CITY**

Special Interest Groups (SIGs)

Our SIG events enable like-minded companies to network, debate the latest developments in the industry and find commercial opportunities for mutual collaboration

Our Aim:

- Keep members up to date with developments
- Explore new business opportunities
- Create opportunities for influencing developments
- Focus on specific technology and market sectors
- Encourage networking



20 SIGs:

Academic & Industry
Automotive & Transport
Business
Connected Devices
Digital Delivery & Content
Future Devices & Technologies
Healthcare

Legal
Location
Radio Technology
Security
Software / Open Source
Small Cell
User Experience

Virtual Networks
Wireless Heritage
Artificial Intelligence
Industrial IoT
Smart Cities
Mobile Broadband

Cambridge Intelligent City- On the Ground, In the Air

Example programme: IoTUK Boost

A programme to support ≥ 10 x **SMES** to deliver Internet of Things (IoT) enabled services and applications on an installed LP-WAN network.

Makes use of a new Cambridge city wide LoRaWAN network.

Utilises the new Cambridge University Intelligent City Management Platform & Iotic Space

Testing LP-WAN technology solutions, that focus on a genuine need or problem area: **Air quality monitoring, Transport, Primary prevention of ill health in older people**



UNIVERSITY OF
CAMBRIDGE

Health & Social Care Technologies

iot_{UK} | **Boost** South England



Are you a UK-based tech company with innovative **Internet of Things** ideas, products and/or services that could be utilised to address challenges and opportunities in the **Health & Social care** sector?

The deadline for entries has now closed.

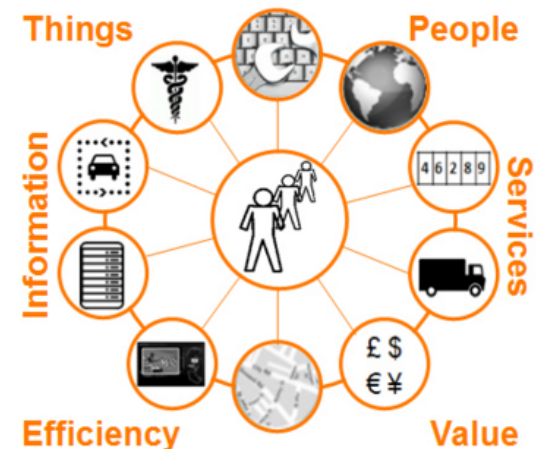
IoTUK is a national programme to amplify the UK's IoT capability. The **IoTUK Boost** activity is designed to support IoT innovation and adoption across business and the public sector through a series of local innovation challenges and incubation activities across the UK.

CW (Cambridge Wireless) has been chosen to deliver the IoTUK Boost programme in the South of England, along with our partners **IoTUK**, **SETsquared Partnership at the University of Bristol** with **Watershed** and **5G Innovation Centre at the University of Surrey**. The programme will identify up to 20 SMEs through a simple application process.

Successful applicants will first attend a preparatory workshop bringing them together with experts, companies and public sector organisations to help find solutions to specific challenges. Following the preparatory workshop, the 20 SME's will be selected to participate in a workshop and innovation contest taking place in Bristol and Guilford.

The emphasis of the Guildford Workshop will be on 'beyond the home or out and about' and the Bristol Workshop will focus on 'in the home or indoor technologies'. SME's with technologies covering both domains will be assigned to a workshop based on space availability.

Health & Social Care Internet of Everything



TECH For Good

THE STATISTICS

- 35% of CW Unplugged attendees were under 35 – *25% higher than CW events average*
- 44% of CW Unplugged attendees were women – *36% higher than CW events average*



CW Unplugged: FemTech
23.02.18



CW Unplugged: Tech-for-Autism
24.04.18



CW Unplugged: Megacities
26.09.18



CW Unplugged: Tech-for-Water
26.06.18

‘Deep learning in medical imaging’

Healthcare SIG event
October 23rd ,
Microsoft, Cambridge, UK

Speakers include:

Prof Fiona Gilbert, Professor of Radiology, University of Cambridge

Dr Hugh Harvey, Clinical Director, Kheiron Medical Technologies

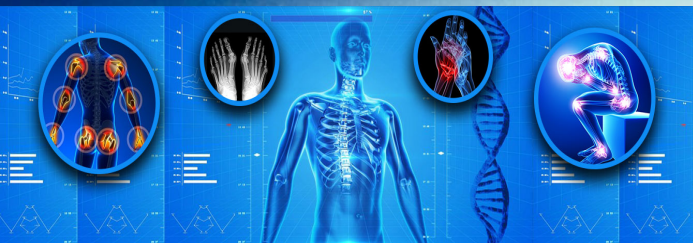
Raj Jena, Radiation Oncology Consultant, University of Cambridge

Dr. Gabriela Juárez Martínez, Knowledge Transfer Manager - Health

and Medtech, Knowledge Transfer Network (KTN)

Dr Antony Rix, Co-founder and CEO, Granta Innovation

Learn whether recent advances in deep learning, through which computers are now able to extract information from images reliably and accurately, can be applied to the field of diagnostic imaging.



www.cambridgewireless.co.uk
#CWHealthcare

