



National Institute for  
Health Research

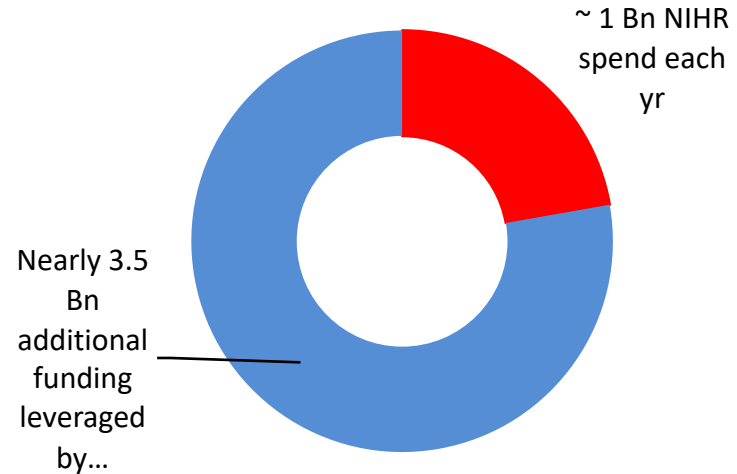
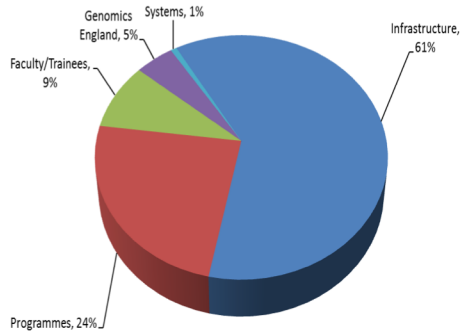
# The NIHR Supporting Medtech SMEs

Martin Hunt

i4i Programme Director

# NIHR: Investing in Health

*To improve the health and wealth of the nation through research*



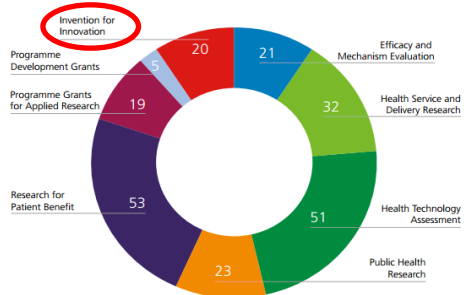
*To provide a health research system in which the **NHS** supports outstanding **individuals** working in world-class **facilities**, conducting leading-edge **research** focused on the needs of **patients** and the **public***

# NIHR & Medtech SMEs



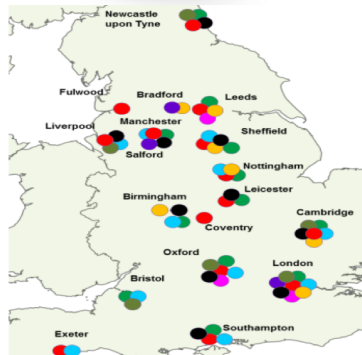
National Institute for Health Research

Funding



Project # funded 2015/16

Collaborators & Experts



Trial sites and support



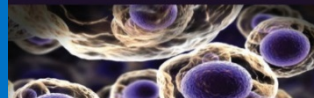
15 Regions (=AHSN)

Rapidly changing environment

**Accelerated Access**

Review of innovative medicines and medical technologies supported by Wellcome Trust

**Life Sciences Industrial Strategy**  
— A report to the Government from the life sciences sector



The New Medical Device Regulation (MDR)

**What is the MDR?**  
The Medical Device Regulation (MDR) is a new European Union (EU) regulation that will replace the current Medical Device Directive (MDD) and the Active Implantable Medical Device Directive (AIMDD) from 2002. It will apply to all medical devices placed on the market in the EU from 2020 onwards.

**Timeline**

Year	Event
2017	MDR and AIMDR adopted
2018	MDR and AIMDR enter into force
2020	MDR and AIMDR apply

**Key changes in MDR**

- Stricter requirements for clinical evaluation and data management
- Enhanced post-market surveillance and vigilance
- Improved transparency and traceability
- Strengthened conformity assessment

**Global medical devices market**

\$402 billion (2016)  
+1.5% CAGR (2017-2021)  
+1.5% CAGR (2021-2025)

By 2025, more than 100 million people will be aged 65 and over, with a significant increase in the number of people aged 75 and over.

# Who we are, what we do



National Institute for  
Health Research

## NIHR translational funding scheme

Led by Programme Director, Martin Hunt

Supported by a team of Programme Managers



**We fund breakthrough technologies**

Through collaborative R&D

By de-risking projects for follow-on investment

# Our value proposition

**Dedicated medtech funding programme**

**Uncapped awards**

**Can be led by academics, clinicians, SMEs**

**Peer review & commercially oriented panel**

**Thorough due diligence for de-risking**

**Risk- and impact focused award monitoring**

**Exposure to early-stage investor community**

# i4i – Highlights



# Applying to i4i

Two PDA calls per year

One Challenge call

- Two stage process
- Collaborative
- Up to 100% of costs for SMEs

One Connect call (SME-led)

- Can be SME only

Next PDA Call Opens on 31<sup>st</sup> Oct

## Evidence of:

Well articulated clinical need  
and patient benefit

Detailed and clear project plan

Team skills/experience adequate

Good business case

IP and commercialisation strategy

Justifiable costs – cost/benefit

Effective PPI

## Health Economics:

**Essential**

Care pathway based

Developed throughout the project

NHS adoption strategy/Barriers identified

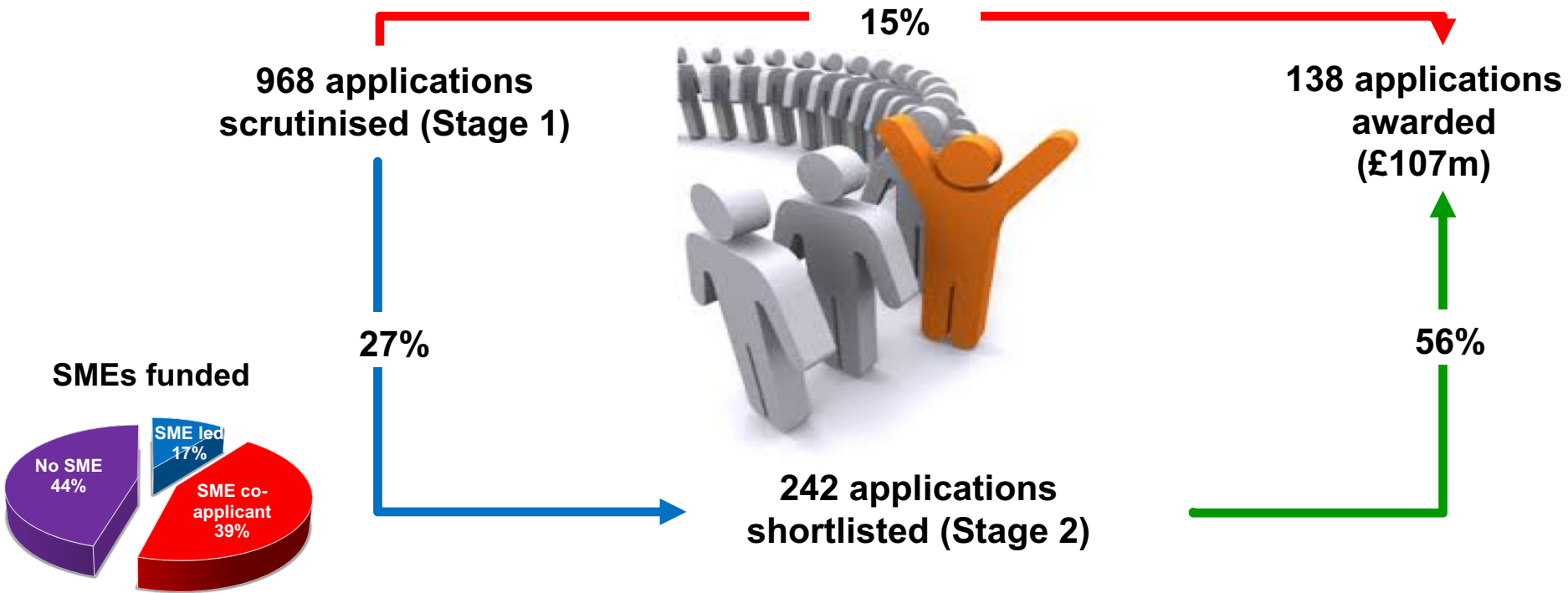
Stage 1

Stage 2

Ratification

Award

# Success rates



Figures based on data from PDA Calls 1-15 and Challenge Awards Calls 1-6

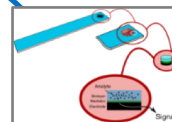


# Funded by i4i

Head UP- Neck collar for patients with Motor Neuronal Disease- commercialised through TalarMade

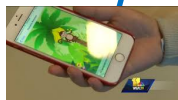


Creo Medical – Smart endoscopic resector for removal of pre-cancerous lesions; IPO at AIM in 2017, recent £48.5m raised



Sarissa - SMARTChip for Stroke diagnosis  
£2m SBRI Phase 2

Therapy Box-  
Speech  
rehabilitation app

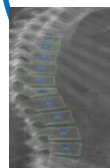


# Funded by i4i



Early detection of AMD- Manchester University spin out

STOpFrac - AI-based detection of vertebral fractures), commercialised through Optasia



QuantumDx- POC DNA diagnostic platform, now over 60 staff; recent £12m investment

Stephen Hicks- Smart Glasses, OxSight spun out, second i4i award for AMD



# Help!

If



Then

- Talk to us today
- Take the brochure away
- Contact us:

[supportmystudy@nih.ac.uk](mailto:supportmystudy@nih.ac.uk)

